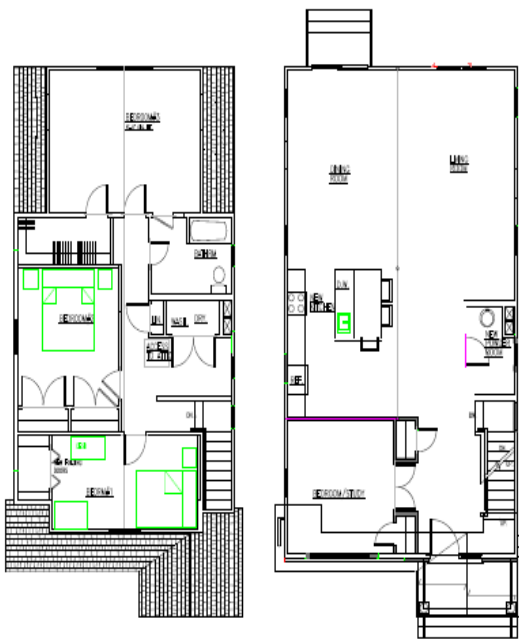


**Town of North Hempstead
Workforce Housing
Renovated House Urban Avenue, Westbury N.Y 11590**



- 2,177 Square Feet**
- Portico Entry
- Entry Cloak Closet
- Powder Room Bath
- Open Plan Living
- Kitchen: Island w/ Seating, - Stainless Appliances and ---Hard Surface Counter
- Patio Door
- Patio
- Three Bedrooms
- Hall Bath
- New Landscaping
- Master w/ Walk-In Closets
- Full Cellar Storage



Technical Information

Property 5,000 sq. ft.

1st Floor 1,088 sq. ft.

2nd Floor 1,088 sq. ft.

Living area wood floors

Bedrooms Carpeted

City Water and Sewers

Natural Gas Heat

Central Air Conditioning

**Artist's illustrations and sizes are approximated actual conditions may vary.*